



MJHS ISABELLA CENTER
CELEBRATES 150TH
ANNIVERSARY

2



IT'S ALWAYS AWARDS
SEASON AT MJHS!

6



CELEBRATING A YEAR
OF IMPACT

8

SPRING 2025

MJHS

infocus

Our participating agencies

HOME CARE

HOSPICE & PALLIATIVE CARE

MENORAH & ISABELLA CENTERS FOR
REHABILITATION AND NURSING CARE

ELDERPLAN / HOMEFIRST
HEALTH PLANS

INSTITUTE FOR INNOVATION

Elderplan/HomeFirst: 40 Years of Caring for the Community in Innovative Ways



ALSO IN THIS ISSUE

- **MJHS Health System Elects New Board Chair**
Bradley Fluegel
- **Thank You 2024 Donors**
Recognizing the donors who supported our excellent care!

When you celebrate a special anniversary in your life, do you take a moment to pause and reflect? That's what we're doing at Elderplan/HomeFirst as we mark 40 years of caring for at-risk members of our community.

As a not-for-profit health plan, that is a participating agency of MJHS Health System, Elderplan/HomeFirst shares the organization's same core values of compassion, dignity, and respect. Founded in 1985, Elderplan was one of the first Medicare Social HMO demonstration projects in the United States. Today, Elderplan offers affordable Medicare Advantage and long-term care plans to New Yorkers at every level of health.

Continued on page 4

MJHS Isabella Center Celebrates 150th Anniversary by Finding Even More Ways to Give Back



We couldn't be prouder that MJHS Isabella Center is celebrating its 150th anniversary! And just as you'd expect, we're not skipping a beat in finding ways to honor the occasion by caring for, supporting, and guiding the community in some truly remarkable ways!

Helping Vulnerable Older Adults "Beat the Heat"

During one of the hottest summers on record, MJHS Isabella Center opened a Heat Relief Station for at-risk older adults and their caregivers in the Washington Heights and Inwood communities. Outfitted with air-conditioning, ice-cold water, and even therapeutic recreation activities, it was our honor to welcome up to 70 people at a time to stay cool! This resource was especially important because so many of MJHS Isabella Center's neighbors do not have air-conditioning at home and need a place to cool down and hydrate during the hottest hours of the day.

IN THE NEWS

This nursing home is one cool place – and their neighbors thank them for it



Elected Officials Celebrate MJHS Isabella Center's Cool Community Initiative

“In the sweltering summer months, the MJHS Isabella Center's Heat Relief Station emerges as a vital lifeline, shielding our seniors from extreme heat with compassion and accessibility. This initiative not only saves lives but also underscores a commitment to the well-being of our most vulnerable, showcasing the strength of community and care in Washington Heights.”

– **Robert Jackson**, New York State Senator

“As summers get increasingly hotter, it's imperative that vulnerable New Yorkers have access to reliable places to cool off and avoid heat-related illness. I'm incredibly grateful to MJHS Isabella Center for opening this Heat Relief Station to Washington Heights' older adult community.” – **Mark Levine**, Manhattan Borough President





Backpack Giveaway for Neighborhood Kids

Sometimes it takes a little extra help to get a fresh start, whether it's our patients receiving short-term rehabilitation, or elementary school students in the neighborhood starting the school year! While many people remember the giddy feelings of excitement about returning to school and reuniting with friends, it can also be a time of anxiety for students who don't have the supplies they need to succeed. To help close this gap, we proudly hosted the "School is Cool" Backpack Giveaway event for elementary school students from neighboring The Equity Project Charter School. Our staff handed out backpacks filled-to-the-brim with pencils, folders and notebooks. The kids were not just thrilled to receive colorful bags, but also the after school treats that we had lined up waiting for them!

Turkey Giveaway Makes for a Memorable Thanksgiving

Thanksgiving may be in the rear-view mirror, but the memories of gathering with loved ones and enjoying delicious food will last a lifetime! We're very grateful that we were able to help make Thanksgiving more memorable by providing turkeys to many clients of our UMPSI Program (Upper Manhattan Partnership for Senior Independence), which helps older adults age safely at home. When clients arrived for pick-up at our MJHS Isabella Center, they were greeted with festive decorations, friendly smiles, and lots of interest in their Thanksgiving traditions and favorite recipes. Our staff even took the event on the road to deliver turkeys to Nido De Esperanza, an organization that serves families and children with the goal of disrupting the cycle of poverty.



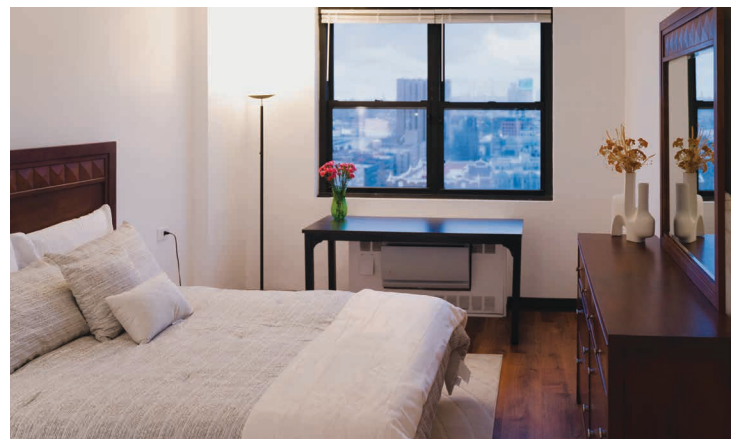
A Valentine's Day to Remember

You hear us talk about it a lot, but music and dancing are good medicine for your body and soul! That was certainly on display at a joint MJHS Isabella Center and ARC XVI Fort Washington Valentine's Day event. A capacity crowd of older adults from the community enjoyed a delicious meal before showing us their moves on the dance floor! A highlight of the 3-hour event, hosted at ARC XVI, was when we gave out goody bags filled with cozy gloves and hats. But the biggest round of applause came when it was announced that Isabella is celebrating 150 years of providing quality care. There was certainly lots of love in the room that day!



Renovation of Isabella House

As part of our 150th anniversary year, we have also undertaken the renovation of Isabella House, a high-rise apartment building located on the campus of MJHS Isabella Center that provides independent living for adults aged 62 and older. Our bright, spacious, and newly-remodeled studio and one-bedroom apartments are moderately priced, offer breathtaking skyline views, as well as many amenities, creating a comfortable and enriching living experience. ■



Continued from page 1

This includes Special Needs Plans for individuals who qualify for a nursing home level of care but still live at home, as well as plans for those living in nursing homes, or assisted- or independent-living communities. HomeFirst, which is also part of Elderplan, opened enrollment in 2001 and is one of the original managed long-term care plans in New York State. Elderplan/HomeFirst cares for beneficiaries across New York City, as well as Nassau, Westchester, Rockland, Putnam, Dutchess, Orange, Sullivan, Ulster, and Monroe counties.

Join us as we look back at some of the past year's highlights and the innovative ways we're *Leading the Way to Great Care.*SM

Making it Easier for Members to Access Preventive Care

We don't have to tell you: life is busy! To help our members make preventive care one of the easiest items on their checklist to complete, Elderplan/HomeFirst partnered with Mount Sinai to bring a mobile mammography screening unit to a convenient location in the Washington Heights/Inwood community: our MJHS Isabella Center campus. This breast cancer screening initiative promoted early detection and improved health outcomes for our Elderplan members.

Newest Community Resources on the Block

Earlier this year, Elderplan/HomeFirst opened two community offices that are convenient resources for members seeking support and information about their health plan coverage, how to access plan benefits, as well as offer opportunities to participate in health and wellness activities. The community offices also offer prospective beneficiaries valuable plan information and another way to enroll. As a mission-driven, not-for-profit health plan, committed to closing gaps in care for our members of all backgrounds, opening our very first community offices is the perfect next step in increasing our ability to support existing and potential beneficiaries!

First-Ever Elderplan/HomeFirst Community Office in Washington Heights

With the cut of a ribbon, the doors officially opened on Elderplan/HomeFirst's first-ever community office in Washington Heights offering support in English and Spanish right in the heart of this vibrant community.



“For over four decades, Elderplan/HomeFirst has been a cornerstone of care and compassion, uplifting older adults and individuals with disabilities with dignity and purpose. The opening of this new Washington Heights Community Office is more than a celebration—it is a testament to their unwavering commitment to accessibility, wellness, and empowering our neighbors. This office stands as a vital resource and a lifeline for the most vulnerable, ensuring every member of our community can thrive with the support they deserve.”

– **Robert Jackson**, New York State Senator



“Healthcare coverage can be confusing and daunting to navigate, so Elderplan's new community office will be an incredible resource for some of the most vulnerable New Yorkers. Removing barriers to staying healthy and accessing high-quality care is always a win.”

– **Mark Levine**, Manhattan Borough President



New Flushing Elderplan/HomeFirst Community Office

Lion dance, check. Drummers, check. Good fortune, check. The grand opening celebration of our first community office in downtown Flushing took place during the lunar new year, so we made sure it kicked off with cultural traditions that captivated the crowd and passersby.

“Older adults or individuals living with disabilities face unique challenges when it comes to accessing quality healthcare, including language barriers, limited mobility, and unfamiliarity with complex health systems which can make it difficult to get the care and support they need. This is about more than convenience, it’s about equity and making sure that older adults and individuals with disabilities have the same opportunities to live healthy, dignified lives. By establishing this community office right here in downtown Flushing, Elderplan/HomeFirst is helping to close critical healthcare gaps among some of our most vulnerable, at-risk residents. I know this new office will serve as a bridge to better health for so many in our community.”

– Sandra Ung, NYC Councilmember

We were thrilled to receive these messages of support for our Elderplan/HomeFirst Community Offices from elected officials and are excited about the buzz they have created in the community! ■

Want to check out the community offices for yourself, or share this new resource with friends or family?

Come by Monday– Friday from 9:00 a.m.– 5:00 p.m. and by appointment on weekends. Meetings can be scheduled through elderplan.org or by calling (866) 360-1934.

Flushing
36-59 Main Street

Washington Heights
564 West 181st Street

DID YOU KNOW?

Elderplan/HomeFirst now has its own social media channels. Make sure to follow [@Elderplan](https://twitter.com/Elderplan) wherever you scroll, so you don’t miss out on any of our exciting content!

It's Always Awards Season at MJHS!

Just like the incredible displays of dedication and skill at the Olympics, show-stopping performances of The Tonys, and the high-stakes excitement of the U.S. Open, MJHS is always in the spotlight for excellence. Keep on reading to learn about our latest accolades that include earning gold and platinum.



What do you give an organization that demonstrates that it is quality-driven and focused on continuous improvement in patient care? The answer is a Gold Seal of Approval!



For nearly 15 years, MJHS has repeatedly earned accreditation from The Joint Commission, the nation's leading health care accreditation and standards-setting organization. Their recognition is widely recognized as an endorsement of a health care organization's commitment to providing safe and quality patient care.

MJHS Hospice and MJHS Home Care both earned The Joint Commission Gold Seal of Approval again this year. Here are two additional facts that we're proud of: **MJHS was the first home care agency** in the country to earn the Gold Seal for our Heart Failure Disease Management Program; and MJHS was the first community-based palliative care organization in the nation to ever receive this Gold Seal of Approval.

Each accreditation was awarded based on an in-depth onsite review that included patient care documentation, infection prevention and control, procedures and policies, as well as patient visits. The Joint Commission's standards are developed in collaboration with health care professionals, providers, patients, and industry leaders. They're also informed by scientific literature and consensus from trusted authorities to help health care organizations measure, assess, and improve performance... making our standards pure gold, of course!

Celebrating Inclusivity and Excellence



Many older LGBTQ+ individuals have faced social stigma, discrimination, isolation, and prejudice throughout their lives. This history can make seeking or accepting health care a daunting experience. Fortunately, MJHS has a long-standing commitment to building trust and providing quality care with compassion, dignity and respect. SAGE, the country's largest and oldest organization dedicated to improving the lives of LGBTQ+ older adults, has repeatedly recognized our unwavering dedication to inclusivity.

For nine years in a row, MJHS Hospice has proudly achieved SAGECare's Platinum Credential – their top honor. This recognition reflects our extensive training in LGBTQ+ aging needs and includes ensuring we honor each person's gender expression and relationship status, when providing in person care as well as in electronic medical records. MJHS Home Care has also earned the Platinum Credential from SAGECare for the past three years.

Training Reaches New Heights

"Excellence is an art won by training and habituation," said Aristotle, and MJHS Health System truly embodies this philosophy. Earlier this year, our dedication to continuous learning and professional



development earned us the prestigious Training APEX Award. This recognition also highlights our efforts to centralize and advance educational initiatives.

The Training APEX Awards ranks companies nationwide based on their demonstrated commitment to the growth and success of their employees, considering factors like program scope, alignment with business goals, financial investment in employee development, and more. In our first year of consideration, MJHS was ranked 51st on their list of top 100 companies out of almost 1,000 applications. What an accomplishment and what an honor!

Honoring Experience

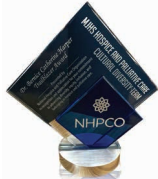


MJHS Health System is officially certified as an age-friendly employer. We received this certification from the Age Friendly Institute for our inclusive and supportive work environment for individuals aged 50 and above, based on an evaluation of best practices in key areas including recruitment, employment policies, practices, and programs.

“We’re thrilled to be named an Age-Friendly Employer, said Nadine Ferguson, Chief Human Resources Officer of MJHS Health System. “As a not-for-profit organization whose mission is to deliver high-quality care to people of all backgrounds and life experiences, we also proudly recruit talented professionals from a demographic known for its knowledge, maturity, reliability, and productivity. This certification will help further differentiate us in a competitive health care job marketplace,” Ferguson added.

A Passion for Compassion

We’re thrilled to be the inaugural winner of the Dr. Bernice Catherine Harper Trailblazer Award from the National Alliance for Care at Home (formerly National Hospice and Palliative Care Organization), which honors organizations that exemplify Dr. Harper’s spirit of innovation and compassion, commitment to advancing diversity, equity, inclusion and belonging, as well as passion for providing high-quality, culturally appropriate, person-centered services.



Dedicated to Veteran-Centered Care



For the sixth consecutive year, MJHS Hospice has been named a Level 5 Partner (their top status) in the national We Honor Veterans program, originally launched by the National Hospice and Palliative Care Organization and the U.S. Department of Veterans Affairs.

This prestigious recognition underscores our unwavering commitment to providing Veteran-centered care.

Day after day, we emphasize respectful inquiry, compassionate listening, trauma-informed care, and grateful acknowledgment of service. Our goal is to guide Veterans toward a more peaceful end-of-life care and ensure their families receive the support they need. We also mentor other hospices in our region, enhancing their Veteran-specific programs and services.

Level 5 is the highest category possible in this inspiring initiative that addresses the growing need for Veteran-centered care, especially as a larger generation of Korean, Vietnam and Gulf War Veterans require access to compassionate palliative and hospice care. It is such an honor to be repeatedly recognized at the highest level and we remain committed to providing exceptional care for our Veterans. ■

Commitment to Excellence

Earlier this year, 74 health care professionals from hospital systems, long-term care facilities, home care organizations, independent practice associations and federally qualified health centers across the greater New York metropolitan region, were honored by the United Hospital Fund for their “extraordinary personal leadership to improve quality of care, patient safety, and patient experience.” We’re proud to say, this included four of our own:



Deirdre Downes, LCSW
*Corporate Director,
Social Work and Supportive Care Programs*
MJHS Isabella Center for
Rehabilitation and Nursing Care



Eunice Ference, PharmD
VP, Pharmacy Services
Elderplan/HomeFirst



Joyce Palmieri, MS, RN, CHPN, FPCN
SVP, Clinical Services
MJHS Hospice and Palliative Care



Josie Vega, BSN, CAE, BLS-I, RN
Education Coordinator
MJHS Menorah Center for
Rehabilitation and Nursing Care

That same month, **Amy Lee**, director of Medicaid and integrated products at Elderplan/HomeFirst, was included in the inaugural list of Asian Trailblazers by City & State, a new multimedia organization.



**CONGRATULATIONS TO
ALL OF OUR HONOREES!**

Celebrating a Year of Impact

As we reflect on the past year, we are proud to share the incredible milestones the MJHS Foundation has achieved. Thanks to the dedication of our generous supporters and staff, we have raised funds to advance vital programs that directly impact our patients, residents, and their families, regardless of ability to pay.

To advance this effort, the MJHS Foundation hosted four standout fundraising events last year, all of which underscored the mission of MJHS to provide the highest level of care and support to all members of our community.

The MJHS Golf Classic



Our annual Golf Classic took place last June and was a resounding success. Over 250 people joined us for a day filled with golf, raffle prizes, mingling, and great food. **We raised over \$850,000 for our programs and services**, highlighting the significant impact made by our donors!

We look forward to swinging into summer with you at our 2025 Golf Classic on June 30 at Old Westbury Golf & Country Club — a larger 27-hole course that will allow us to host more guests and speed up play.



In 2024, your dollars enabled us to have remarkable impact:

- Provided more than **1,898** music and therapy art sessions to patients in need
- Facilitated over **3,100** in-person, group, and phone bereavement support sessions
- Provided over **5,120** Home Health Aide Hours to families in need
- Provided trauma-informed care to over **280** Veterans and **80** Holocaust survivors
- Offered inclusive care to **100** patients who identify as LGBTQ+
- Cared for over **750** hospice patients daily with expertise, compassion and dedication

Wine Tasting



Last September, we held our 6th annual Wine Tasting fundraiser to benefit the Golden Family STAR Fund, which supports MJHS Hospice family caregivers by providing additional home health aide hours. Thanks to our generous sponsor, who is also a grateful family member, we tasted delicious Tuscan wine paired perfectly with Italian-inspired hors d'oeuvres. The evening featured a moving story from a family that benefited from additional home health aide hours when their father was cared for by our hospice program. Thanks to our community's support, **we raised funds to provide 1,000 home health aide hours for families under our care.**





Hospice Goes to Broadway

Our signature event last November drew a record-breaking crowd to support Linda Rhodes, a grateful family member and advocate for the MJHS mission, with the 2024 Philanthropic Leadership Award—and to see the Tony Award-winning Broadway show “Hell’s Kitchen.” The evening featured a dedication to our honoree, a heartfelt story from a family impacted by our music therapy program, and a moving dedication to our outgoing Board Chair—Danielle Rollman. The funds raised supported our hospice programs including: music therapy, pediatric hospice, and dementia care. Look out for details about this year’s Hospice Goes to Broadway Event.



The MJHS Employee Giving Campaign



Each year, MJHS employees come together to support the community we care for through the MJHS Employee Giving Campaign (EGC). Established over 30 years ago, the EGC allows MJHS staff to expand upon our history

of supporting essential programs that benefit patients, residents, and their families. In 2024, our colleagues united to raise over \$120,000 in support of pediatric hospice, dementia care, and other vital hospice programs. ■

In addition to event successes, we proudly expanded our commitment to clinical excellence by funding two educational programs for clinicians:

- The **Palliative Care Fellowship**, designed to equip health care professionals with the specialized skills to provide comprehensive support to patients with serious illnesses.
- A **continuing education scholarship**, which provides MJHS nurses and social workers with access to continuing education to enhance their skills and professional development.

By investing in education, we are ensuring that expert, compassionate care remains at the forefront of health care delivery. Both opportunities were made possible by the generous support of our grateful family donations.

LOOKING AHEAD

As we celebrate these accomplishments, we remain focused on our mission of providing expert clinical support, comfort, and guidance with dignity and respect for every patient, resident and family member who entrusts us with their care. Through intentional outreach, we continue to strengthen partnerships with community members of all backgrounds who support end-of-life care, ensuring that all families feel seen, supported, and cared for in their time of need. We are deeply grateful to our board members, donors, and staff for making these achievements possible.

Together, we are building a stronger, more compassionate community. If you are interested in learning more about MJHS Foundation, please visit us at mjhsfoundation.org.

Health Care Advisor and Educator Elected Chair of MJHS Health System Board of Directors

At the start of 2025, Bradley (Brad) Fluegel began his term as Chair of the MJHS Health System board of directors.

He succeeds Danielle Rollmann, who served her full term and is now the immediate past Chair of the system’s board.

Fluegel has significant health care, corporate vision, advisory, and joint venture leadership expertise. He is an advisor to health care organizations, entrepreneurs, and other participants in health care. Previously, he was SVP and Chief Health Care Commercial Market Development Officer for Walgreens. Before that, Fluegel was an executive at leading organizations, including Health Evolution Partners, Elevance, and Aetna.

Fluegel holds a Bachelor of Arts in Business Administration from the University of Washington and a master’s in public policy from Harvard University’s Kennedy School of Government. Fluegel also serves as a lecturer at the University of Pennsylvania’s Wharton School of Business. ■



2024 DONORS

Thanks to our donors who contributed to our health system, foundation and participating agencies, we were able to further invest in our programs and services as well as expand our ability to provide high-quality, compassionate health care for more New Yorkers.

To donate to MJHS Foundation, visit mjhsfoundation.org or scan the QR Code.



PRINCIPLE \$250,000+

UJA-Federation of New York

BENEFACTOR \$100,000-\$249,999

Anonymous
Bestcare, Inc.
The Y.C. Ho/Helen and Michael Chiang Foundation
JFNA
Estate of Benita Lack
Mother Cabrini
The New Jewish Home
New York Community Trust
John A. Shapiro
TD Bank

LEADER \$25,000-\$99,999

Bloomberg Philanthropies
Crowell
Enxelia Pharmacy Group

Forvis
LI Script, Inc.
Estate of Marcia Lotto
The Manne Family Foundation
Estate of Linda Gail March
Moses L. Parshelsky Foundation
Linda J. Rhodes,
Graystone Consulting
Special Touch Home Care Services
Unitex
Waldners & Steelcase
The Wasily Family Foundation

CHAMPION \$10,000-\$24,999

Anonymous
Americare Homecare
Madeleine and Alexander S. Balko
Patrick Barlow
Baron Capital Foundation
Carolyn Callahan

CBRE
Centers Health Care
CKEW Foundation, Benasich Family
Estate of Phyllis & Lee Coffey
Command Direct
Epic Brokers
Ellen and Robert Grimes
HealthEdge Software, Inc
Heart to Heart Home Care
Highland Partners Charitable Fund
Jack Resnick & Sons
Johnson & Johnson
Matching Gifts Program
Knights of Pythias (Dr. Morris Smoller Social Services Fund)
Longevity Health Services
Aaron Malinsky
Geline Midouin and Erik Trojan
New York Health Care
Preferred Home Care of New York

Laura and Steven Robbins
Stellar Health
Cheryl and Steven L. Topal
Karen and David Wagner, CPA

PATRON \$5,000-\$9,999

Abigail and Abraham Brody
Care 365 Homecare
Caring Professionals
Laurie A. Chichester
Alex Cleveland and Brad M. Fluegel
Clifton Budd & DeMaria, LLP
Conference on Jewish Material Claims Against Germany, Inc.
Edward H. Davis, Jr.
Cynthia and Burton J. Esrig
Temi and Eli S. Feldman
FreedomCare
Concetta Gallo
Sylvia Golden
Golden Touch Home Health

Renee and Arthur Goshin, M.D.
Harmelin Media
HHA eXchange
HUB International Northeast
Taylor and Stephen C. Jackson
JS Homecare Agency of NY
Ronit and Amir Kishon
KMF Distribution
David Koschitzki
Sita Krishnaswamy, M.D.
Mark Lipton, Ph.D.
Matthew S. Marcus
Anne Marinaro
Susan and Ronald B. Milch
Patient Care Associates
Productive Programming Inc.
Danielle F. Rollmann
Robin and Steven J. Rotter
Franklin Rudolph
Tina Sadarangani, Ph.D. and Matthew Sherwood
Arlene B. Savitsky

SCS/SPS Community Solutions
Sheppard Mullin Richter & Hampton LLP
Somos
Nancy and Jay Talbot, MBA
Theradynamics Rehab Management LLC
Carol and Lawrence Zicklin

ADVOCATE

\$2,500-\$4,999

5th Avenue Market of Morgan Stanley
Terese Acampora
Air Ideal Inc.
Allstar Homecare Agency, Inc.
Diane Ashley and Robert S. Feingold
Richard Berman
Beyond Direct
Black Veterans for Social Justice
Belle Bonder
Brownstein Group
Buyer Advertising
Care to Care, LLC – Stanson Health
Soon Carl and Chong Carl
Cigna Foundation
CohnReznick, LLP
Consilium Partners360, LLC
CQ Fluency
Curatus
Downton Care Ltd / New Solutions Staffing
Epstein, Tavroff & Leon, DPM, LLP
Nadine S. Ferguson
Garfunkel Wild, P.C.
Lynn Gonsor
Green Key Resources, LLC
Gretchen Hagerty
Carol Harrison
Healthcare Risk Advisors
Healthplex, Inc.
Hellmuth & Johnson
Hinman Straub Advisors, LLC
Homewatch Caregivers of Nassau County
Incomm Healthcare & Affinity Inc
Chad Johnson
Melissa L. Kretschmer
Lazard Asset Management
Lincoln IT, LLC
Manatt, Phelps & Phillips, LLP
MatrixCare
MedReview Inc.

MHK
MKDA
Morgan Stanley
NYC Marketing Enterprise
Omega Staffing Solutions, Inc.
Optum Insight
Randi and Michael R. Potack
ROI Marketing, LLC
Rich Rothman
Royal Care Inc
Hanni and Charles Rudansky
Sandstorm Design Inc.
Suzanne Schecter
Segall Bryant Hamill
Nancy B. Sever
Stacey Braun Associates, Inc.
TGI Office Automation
TobinParnes Design
Christina D. Van Vort
Wakely
Walter T. Gorman P.E., P.C.
Withum, Smith & Brown, PC
Z-RADAR

FRIEND

\$1,000-\$2,499

Anonymous (2)
Actalent
Anca Adams
ADJ Wisdom Home Care
All American Homecare Agency Inc.
Elaine Alpert
American Indian Community House, Inc.
Stacie Appel
Axiom Systems, Inc.
Peter S. Bailey
Eni Bakalbashi
Barbara and Charles G. Beaver
Debra Berman
Bi-County Mechanical & Plumbing, Inc
Steven G. Biller
Jill Blair and Fay Twersky
Marnie Blumenthal and Lance Tracy
Stephen Brotman
Bruvildo Inc.
Laurissa Burns
Michele Cardella and Stuart Gold
Mary Ann Casati
Tommy Z. Cen
Compass Healthcare Consulting & Placement
David H. De Weese



The Helen and Philip Delman Foundation
Larry Delson
Elizabeth Dobell
James J. Duffy
Felicia Dyer Johnson
Brian K. Endres
Nancy R. Famiglietti
Barbara F. Fletcher
Karen A. Franck
Laurie Gilden Lindner, Ph.D.
Nicole M. Gingerella
Alicia Ginsberg
Give Lively Foundation Inc.
Judith Gold
Janet Gornick, AIA
Greenberg Traurig LLP
Harris Beach, PLLC
Ilene Heller
Timothy P. Higgins
Wendy Hirschhorn
HMG Studios
Samuel Hornick
Rhona and Sanford Hutton
Jackson Lewis P.C.
Kaufman Borgeest & Ryan LLP
Judy and Uri Kaufthal
Lynn Kearney
Elaine Kellman
Hina and Imran Khan
Susan and Andrew Kohen
Vivian Kurzweil
Carole Leibner
Ruth and David Levine
Dina Liberman
William Luecken, Jr
Pat and Larry Mann
Jonathan Mann
Gloria Margulies
Laura Masurovsky
Shelly Mazin

Susan Merinoff
Lynn Mestel
Micromanagement Inc.
Mary Miller
Morgan, Lewis & Bockius LLP
David Neiditch
Carolyn Newman
Laura B. Niland
Nixon Peabody LLP
Nouveau Elevator Industries
Benjamin Pace
Kerrianne P. Page, M.D.
Joyce D. Palmieri
Alicia Peiper
Terry Pickett
Marc Plonskier
Francisco E. Polanco
Loyola Princivil-Barnett
Hope and Michael Proper
Patricia Quick
Ian T. Ralfini Goodliffe
Harmony Reynolds, M.D.
Rhode Island Indian Council, Inc.
Leslie Rikon
Marina Robeck
Marcia and Philip W. Rosen
Ira Rubin
The Noreen Gordon Sablotsky Family Philanthropic Fund
Sage IT
Stacey and Daniel Schulman
Linda and Eric Scalettar
Lydia O. Schwartz
Stephanie Seligman
Melissa Selip
Estate of Saul Shapiro
Sheeley, LLP
Fred S. Siegel
Susan Solomon
Alice Szigethy

The Leadership Development Group
The Weeks Lerman Group, LLC
Tri Med Homecare
True Care
Sharon and Jerold Volk
Saul H. Wadowski
Jessica M. Wares
Allan Weinstein
WeWil Ilc.
Maria and David Wildermuth
Kim-Pok Wong
Barbara and Harvey L. York
YourCause, LLC Trustee
William M. Zangwill, Ph.D.
Alexander Zaslavsky
Joshua Zatulove

SUPPORTER

\$500-\$999

21st Century Advertising
Mattice and Marc Aaronson
Daniel Abuhoff, Esq.
Henedina Alibin-Sy
Amer Online
Lillian J. Anazagasty-Pursoo
Anonymous
Michael Aronson
At Home Solutions, LLC
Craig Azoff
Baker & Hostetler, LLP
Baldwin Publishing, Inc.
Martin Balk
Jacob Beniawski
Celeste Bevilacqua
Elliott Bird
BNY Mellon
Dannick Boutin
Debra Boyce-Martinez
Leroy Branch
Bright Horizon Prime Care, Inc

Rita Brody Malka Bronner Building Water Sampling Services Tara M. Buonocore-Rut Gilbert Burgos, M.D. Carelton Behavioral Health Leonardo Castillo Tanya E. Cedenio Ann Cohen Lynn Cohen Community Healthcare Concordance Healthcare Solutions Company John Cuva Denham Wolf DHCare Homehealth, Inc. Dial America Gary B. Dong Deirdre Downes Dr. Mervin Livingston Schloss Fund Driscoll Foods Lisa and Lee Einbinder	Debra Epstein Patricia Eulo Exela Technologies Stacey A. Fanelli Dana Farrell Franklin Templeton Fresh and Tasty Baked Products Teresa and Charlie Friedlander Future Care Health Services Toby L. Gafni-Weiss Michael M. George Carol Goldman and Joseph Simonetti Stephanie Goldman Mila Gorsky and Arkady Krupnik Jane Gottlieb Krista Gottlieb and Joseph Coveney Marcy and Bennett Grau Iris Greenberger Anita Haber Frank Hall	Leila Heckman Help Home Care Help Home Health Care Agency LLC Jack Herschkowitz Hirschen Singer & Epstein LLP Tommy Ho Robert T. Homan Insight Investment Pamela Jacobson Nancy Jennings Joseph Camhi Foundation, Inc. Ann and Tim Kittredge Brandi Kovac Donna Krochak La Familia Steven H. Landers Stella B. Lazarovich Moshe Levison Maisey Liu Carol and Scott A. Lyons M.D. Sass Mark Mallah	Donald E. Martin Joseph Martorana Anne Mills Yelena Nekrasov Joseph R. Nesci Stephen Ng Sandy Nuguid Adriana M. Nunez Kathleen Nusbaum Jaclyn O'Brien Andrew J. Patti Paypal Giving Fund Matt Pecori Polen Capital Management Posit Science Corporation Presto Kitchen Service, Inc. Quest Analytics Christine and Ron Rago Philip Ronzo Shirley Rubin Diane Saatchi Viktoria Sakhnovskaya Joy and Stewart Scharfman	Schoenhut Family Foundation Elizabeth Scholz Eric Schwimmer Constance Shapiro Donald Share Sidhal Chemical Corp. Marcela Simon Melinda and Michael Sims Katherine S. Steadman Sterling Sanitary Supply Corp. Darcy H. Sternberg Sunray Home Care The Lakeshore Donor Fund Lisa Tillman Total Fire Protection Versant Health Candice M. Weatherly Cynthia White Amy Winikoff York Healthcare Maria M. Zapata
--	---	--	--	---

SUSTAINERS SOCIETY

The Sustainers Society recognizes and honors individuals who have committed to securing the future of MJHS' charitable work through planned gifts. For information on how to join, please email Chinwe Egonu, cegonu@mjhs.org.

Anonymous (4) Estate of Stephanie Arcel* Estate of Morris Barocas* Dorothea Blom-Thayer, Ph.D. Estate of Iris M. Boteler* Estate of Catherine Clarke* Estate of Phyllis and Lee Coffey* Lynn Cohen Estate of Mary E. Cullen* Estate of Joseph Djmal*	Rozelle and Lawrence Dorfman Estate of Marilyn Dubcoff* Estate of Eileen Enders* Heide and Hank Federman Evans Fils-Aimé Doris Finkelstein Estate of Mary Elizabeth Finn* Cheryl Fishbein and Philip Schatten Donna Ford Laurie Gilden Lindner, Ph.D.	Richard Glazer Estate of Ethel R. Goldenberg* Estate of Minnie Gordon* Mary Beth Greenberg Estate of Lydia C. Heller* Estate of Olga Hollander* Estate of Martin S. James* Marilyn Kagan Estate of Eva Kaye* Estate of Benjamin G. Kerr*	Estate of Ruth Kowalsky* Regina Lee Estate of Martha B. Leigh* Marcia M. Lotto* Joyce Lowinson, M.D. Estate of Linda G. March* Estate of Florence Neinken* Toby Nemiroff Miriam Rabban Estate of Felicia Ray* Estate of Eleanor Rosenstiel*	Estate of Herbert Rubin* Renee Sarton John A. Shapiro Estate of Saul Shapiro* Estate of Jutta Tannhauser* Estate of Sandra Taylor* Estate of Evelyn Wechsler* Estate of Rachel Winston Rippy* *Posthumous
---	--	---	---	---





2024 EMPLOYEE GIVING CAMPAIGN

Every year, our dedicated employees donate funds to support the programs and services of MJHS. Thank you to our staff, who not only care for our community members but also go above and beyond by donating funds to ensure we can continue providing care to those in need.

Anonymous (81)	Fiona M. Bermingham	Trica A. Case	Nichole L. Cruz	Pilar Eusebio
Lanell S. Abrams	Amanda M. Bermudez	Suzanne Castellano	Yvette Cruz	Afonne U. Eze
Terese Acampora	Rosie Bernard	Leonardo Castillo	Patricia A. Cucci	Kafayat O. Fakeye
Pedro Acevedo	Steve Bert	Michael Catalano	Maria Y. Cummings	Edris V. Falana
Indiana Acosta	Marilyn Best	Virna L. Cataquet	Phyllis Curreri	Nancy R. Famiglietti
Pamela W. Adams	Lisa R. Beveny	Tanya E. Cedeno	Viktoria Cusma	Stacey A. Fanelli
Toyine Adams	Liliya Bezenchuk	Nadine Celestin	Amir K. Dally	Annette Feirman
Anani Agboglo	Dawa Bhuti	Gigi Cen	Tiffany Daniels	Jeffrey Feldman
Enrique Aguilar	Edgar J. Biazon	Tommy Z. Cen	Carl W. Davis	Vivian Feliciano
Jordi J. Aguilar	Howard W. Blatz	Ashley Cen-He	Polina Davshan	Donecia Felton
Viktoriya Akimova	Rina Blech	Leidy Cenices	Anne L. Dawson	Yue Ying Feng
Susan Alessi	Tamara M. Bogle Stone	Allan Glenn L. Cervantes	Nicole De La Vega	Eunice Y. Ference
Henedina Alibin-Sy	Joan M. Bompante	Natalya Chaldysheva	Lucy Del Valle	Nadine S. Ferguson
Elinel Almanzar	Crystal Z. Bonadie	Tricia Chambers	Julio N. Delgado	Raynelly Fernandez
Esther Almanzar	Martha Bonilla	Carrie Y. Chan	Scott R. Demeranville	Ariel D. Fernandez Tiburcio
Doretha A. Alston	Gregory Boozer	Elaine Chan	Sandy Deng	Audrey J. Fidric
Maria R. Amato	Dayna Borden	Man L. Chan	Arielle N. Desport	Bella Fishman
Lillian J. Anazagasty-Pursoo	Dannick Boutin	Nicole Charles	William Dexter	Claudia M. Flores
Ramona N. Andrini	Avery A. Bowser	Patricia A. Charles	Sanata Diakite	Lureen A. Fonfa
Lily Ang	Debra Boyce-Martinez	Antonio Charneco	Lisa D. Diaz	Grigoriy E. Fooks
Ria M. Anthony	Svetlana Braginsky	Linda Charneco	Wilfredo Diaz	Kimone D. Francis
Luis A. Aquino	Jessica Y. Bravo	Karen O. Chatrnuchova	Kathleen M. Dier	Jocelyne J. Francois
Yevegeniya Arakelova	Marcy Brennan	Hangwu Chen	Josephine DiRaffaele	Diana Franschman
Yakubzon	Svetlana Brigida	JieHong Chen	Lee T. Ditkowsky	Jeffery I. Friedman
Anna Aranovich	Anna Briskman	Jimmy R. Chen	Mary Ann Ditta	Josephine Frisari
Maria D. Armora	Anselmo A. Britton Baxter	Li Min Chen	Alicia A. Dixon	Eric Fuenty
Zayra R. Arrieta	Maria Buffa	Michael H. Chen	Valbone Djenasevic	Veronika Fuks
Joyce Arroyo	Suzanne H. Burge	Wang Chen	Ian T. Dobson	Jerry O. Fullard
Olga Asherov	Gilbert Burgos	Yan Fang Chen	Dawn M. Dolce	Margaret Gabriel
Diane Ashley	Jake C. Burnias	Yvette Chester-Cooper	Gary B. Dong	Toby L. Gafni-Weiss
Anzhelika Ashraf	Laurissa Burns	Laurie A. Chichester	Deirdre Downes	Raquel Galan Feliciano
Craig Azoff	Charla M. Burton	Durga S. Chitti	Leona Drescher	Editha S. Gammad
Natividad Baez	Nadine Cadet	Chi Ford Chiu	Yva Dubois	Jessica Garcia
Donna N. Bailey	Claudette M. Cain	Siu Chun Chong-Chen	Felicia Dyer Johnson	Omelfi A. Garcia
Eni Bakallbashi	Maria Calderon	Peter Chu	Maia Dzindzibadze	Silvia A. Garcia Del Orbe
Yelena Baranovskiy	Christopher R. Cambareri	Stella Chucala	Kyrian C. Echekwu	Andrey Garunov
Maximo F. Barbaran Galindo	Theresa Campaign	Luz D. Cintron	Carma S. Edward	Peter F. Gasparik
Sheryl L. Barber	Lisa M. Cantwell	Jeniffer J. Clemente	Marcia Edwards Hicks	Diana V. Gelfand
Marie G. Barrella	Anthony Capobianco	Chantal Coffy	Chinwe U. Egonu	Tamera L. George-Khalifa
Robert R. Baugh	Jessica C. Capuozzo	Susan M. Cole	Nora M. Elhanafi	Mirna M. Germano
Fiona O. Bayne	Stephen J. Caputo	John A. Coleman	Eddy Elie	Diana Geyzer
Andrew Bekirman	Myrna Cardenas	Alfredo Colon	Joceline Emile Phillips	Elina Giuseffi
Anna Beli	Maria Teresa S. Carlos	Helen Cortes	Rosslyn M. Encalada	Myra Glajchen
Abigail D. Benitez	Anne Marie Carolei	Jeffrey Cousins	Isabel C. Estrada-Vetrano	Lyubov Glikman
Francisca C. Benjamin	Phyllis Caruso	Tifany L. Cross	Patricia Eulo	Christine A. Glockenmeier

Lucila Go	Larry R. Jenkins	So Jung Lee	Susan Martin	Anna Y. Nozhkova
Igor G. Goldberg	Stephanie M. Jiang	Amy A. Lee-Moy	Tiansi W. Martin	Madelene A. Nsiah
Svetlana Goldin	Henry E. Jimenez	Megan S. Leese	Marina Maryasina	Sandy Nuguid
Marina Goltser	Warren K. Joefield	Juniara Lessage	Colleen M. Mattina	Adriana M. Nunez
Marina Golubkina	Chad Johnson	Gail A. Lettieri	Kristie L. McAlarney	Jenkee Nunez
Wendy E. Gomez	Jade M. Johnson	Alison D. Lewis	Mary S. McCarthy	Jaclyn O'Brien
Jason A. Gondo	Shania D. Jones	Elsbeth P. Lewis	Lindsay I. McClure	Editha M. Ocampo
Angel O. Gonzalez	Mary Joseph	Shirley E. Lewis	Patrick T. McCormack	Emmanuel Octelene
Kysha Gonzalez	Shannon C. Kaidoo	Theresa Lewis	Irene Mckenzie	Oluremi B. Omodara
Yelitza Gonzalez	Lyudmila Kalendareva	Tinesha D. Lewis-Wallerson	Maria E. McKenzie	Janet U. Onyenwena
Karen M. Goode Harper	Svetlana Kantarovich	Tracy L. Leyzerov	Sharon E. McKenzie-Ali	Laura Paduano
Dashana S. Gooding	Christina Kao	Berry Li	Angela V. McLean	Kerrianne P. Page
Kathleen E. Gordon	Anna Kaplun	Carmen J. Li	Thomas V. McLoughlin	Lettesha C. Palmer-Bansie
Nataliya Gorelko	Bella Karasik	Christie Li	Randy A. McRae	Joyce D. Palmieri
Ruhamah Gray	Yevgeniya Kats	Jian Li	Patria Mejia	Bonny Pang
Xiuhua R. Greenberg	Gurmeet Kaur	Michael Li	Elizabeth Melendez	Sethunath Panicker
Viktoria Grinberg	Gurvinder Kaur	Qiong Yan Li	Milagros A. Mella	Ashraf P. Panjwani
Annie R. Groysman	Kamal J. Kaur	Xiao Feng Li	Barry B. Melman	Susan E. Parks
Mei Yu V. Guan	Lenora A. Kerrison	Rachel Z. Liang	Michael E. Mencias	Kenyon Partlow
Marie C. Guejuste	Malika Khalilova	Shao X. Liang	Deborah Mendez	Adnan Parvez
Ahmed M. Haikel	Amar Khan	Shuzhen Liang	Margaret I. Mendez	Allison M. Pascall
Frank Hall	Radmila Khizgilova	Yuhua Liang	Marguerite F. Metzendorf	Susan G. Pasternak
Taneisha Hall	Md M. Khondaker	Jean Liang Tham	Janice P. Meyer	Paolo Patrinicola
Tiffani Y. Hall	Frances Killins	Dina Liberman	Rosa E. Meyer	Evelyn J. Pena
Edele A. Harding-David	Soyeon Kim	Stacy Lieber	Anna Meytina	Katherine Pena
Donna M. Hartley	Anna Kimelfeld	Cui M. Lin	Agata Michalik	Noelia D. Pena
Janaye Heath-Maple	Nelya Kirichansky	Jin C. Lin	Samantha M. Miesles	Yenny Pena Romano
Genevieve C. Henderson	Ksenia Kiseleva	Yan F. Lin	Natasha F. Miller	Elizabeth Pepin
Lynne Henderson	Jeffrey T. Knam	YanYu Lin	Victoria Mim	Alexander A. Perez
Darlyn Henriquez	Nadine S. Knight	Brenda D. Linch	Anna Mishelevich	Lynn Eden M. Perez
Shalana A. Henry	Jeffrey K. Koon	Jilong Ling	Natasha Mizhiritskiy	Violeta M. Perez
Joan Henry-Brown	Maryann Korn	Naiye Ling	Yolanda Moctezuma	Constance Perrotta
Matthew B. Hepburn	Vered E. Kornblum Kooijmans	Hong Yan Liu	Dina Moldavski	Laiza V. Peters
Eileen Hepworth	David Koschitzki	Mary Lombardo	Nora J. Molloy	Evgenija Petraru
Antonio Hernandez	Diana Koton	Maria D. Lopez	Robert Monaco	Yrdin A. Phanord
Dawn E. Hernandez	Irina Kovalenko	Melba J. Lopez	Lyndia S. Mooney	Germaine J. Phillips
Sheila Hernandez De	Vlad Kovalev	Tiffany M. Lopez	Josephine Moore	Aviel Pierre
Garrido	Karen M. Krieger	Maria LoRubbio	Luis A. Mora	Susan A. Pinto
Nurana Heydarova	Judith Kruger	Cilotte N. Lovinsky	Denise R. Morris	Sara Pitterman
Robbin R. Hicks	Tzipporah Kruger	Xiaoming Lu	Susan Morse	Francisco E. Polanco
Evalyn Hilaire	Jenny Y. Kuang	Alicia S. Luben-Sampson	Natalia Motova	Johanna Polanco
Rosemarie L. Ho	Kanishtha Kumar	William Luecken Jr	Venice Mundell	Trecia A. Powell
Ellen Homan	Marianne G. Ladson	Dier Luo	Ricardo A. Munoz	Samantha D. Presil
Robert T. Homan	Erica H. Lai	Medeya G. Machavariani	Oksana Muradi	Denis Previlon
Chunmei Huang	Jimmy W. Lam	Tara Magno	Daniel B. Myers	Loyola Princivil-Barnett
Xiao Feng Huang	Rebecca C. Lam	Annie Mai	Michelle Nedd-Cameron	Chenshuang Qu
Yi Ping Huang	Elizabeth Lamanna	Shu Yu Mai	Joseph R. Nesci	Eileen Quinlan
Jing Jing Hu-Rivera	Tomasz Lantowski	Omoshola O. Mak-Adedapo	Betty Ng	Tanya Quinones
Seff Ijaz	Kim Chi Lau	Maxim Maksimenko	Fanny Ng	Miryam E. Rabner
Shelly J. Inniss	Jessica M. Laufer	Daniel Mammon	Miao Zhen Ng	Baby M. Rambaran
Ilene K. Isaacs	Mary P. Lavelle	Vijai Manohar	Stephen Ng	Melessia N. Ramlakhan
Robert D. Jackson	Stella B. Lazarovich	Joanne Marcelin	Abelardo Nieves	Rameshwar Ramnarine
Stefanie A. Jacobs	Patricia Leahy	Emily Margolis	Jolanda I. Nieves	Daniel Ramos
Guinie Z. Jacques	Jennifer Leavitt	Jason L. Margolis	Laura B. Niland	Candita Ramos-Montes
Alan J. Jasper	Bernadette Ledesma	Dara K. Marsh	Adrienne L. Noble	Svetlana Rapoport
Sylvio Jean	Juma Lee	Cristobalina D. Marte Rodriguez	Angena Noel	Yevgeny Rayev
Gregory Jean Michel	Mayna Lee	Priscilla Martes	Lioudmila G. Novikov	Johnathan L. Reed

Livingston A. Reid
Qifeng Ren
Jasmin Reynoso
Karen A. Richards
Craig R. Rijkaard
Ashley A. Rivera
Laura Rivera
Luis Rivera
Barry Robbins
Lenay K. Robinson
Pedro Rodrigues
Francesca M. Rodriguez
Carolyn Rojas
Audry C. Rojas Luzon
Vera Rokhman
Dolores M. Roque
Jomari D. Rosado
Magaly Rosario
Lisa S. Rosenzweig
Kereisha Rowe
Liliya Rozenfeld
Marina Rozhitsky
Charles Rudansky
Emma Ruinsky
Catherine Ruiz
Jesus Ruiz
Melanie Russo
Robert Ryke
Jean Roody Saintil
Jamoliddin T. Salamov
Nancy J. Salerno
Roxanne N. Salgado
Juan J. Sanchez
Raquel Mae S. Sanchez
Reginald K. Sanders Jr
Jasmine Santiago
Jeremy Santiago
Justin Santiago
Leslie D. Scafuto
Winifred S. Schein
Krystal Schoener
Elizabeth Scholz
Marvelle Schultz
Linda Schur Scalettar
Doreen L. Scupelliti
Mary Ellen Sennert
Nancy B. Sever
Madeleine R. Shaughnessy
Stephanie R. Shuman
Andrew J. Sidebottom
Donna M. Siegenthaler
Cristina C. Sierra
Evelyn Sierra
Christopher Sigamoney
Sarah V. Silberman
Justine M. Silver
Yelena Sinelnikova

Lokender Singh
Maria Skefalidas
Devania S. Skyers
Meryl I. Slatky
Tennille A. Springer
Maggie Sterling-Elie
Max M. Stern
Ashton J. Stewart
Nicole M. Stewart
Anna Stoyanovskaya
Raquel A. Straus
Ashok K. Sugrim
Vyacheslav Suhostavskiy
Susana Sukharenko
Maria A. Sullivan
Lai Y. Sum
Jason S. Synakowski
Rong J. Tan
Cheuk Yan Tang
Lane P. Tatman
Mildred A. Tauber
Glenda Tavano
Alexandra Taveras
Juan C. Taveras Cortorreal
Damani C. Taylor
Jenice Taylor
Salome Tcheishvili
Samantha Ternier
Frances D. Terranova Florio
Ganesh Thakoordyal
Andrene M. Thomas
Keosha K. Thomas-Williams
Elena Titova
Karina Toniyeve
Cristobal Torres
Eliel Torres
Margaret M. Trollo
Honorita Tsang
Marina M. Tsekanovich
Donald S. Tupper
Tiffany M. Turnage
Eric H. Turner III
Larisa Turovskaya
Alexander Tushishvili
Robert J. Tynan
Bipasha Uddin
Nana Uemura
Christina D. Van Vort
Patricia Vanish
Krystalin A. Vargas
Carolina Vargas Loaiza
Faina Vasserman
Julie A. Vaughan
Inna Vayner
Josie Vega
Marisol Vega Beecham
Jessica Velazquez

Alfredo Velez
Luis A. Velez
Michele N. Ventour
Christine A. Vernon
Camell E. Villanueva
Arlene D. Vixama
Tova Vizel
David Wagner
Taihisha Walker
Maureen M. Walsh
Sandy Y. Wang
Yaxin Wang
Danielle M. Ward
Jessica M. Wares
Madeline W. Wares
Lillian T. Washington
Audrey O. Waters
Candice M. Weatherly
Carol K. Weatherly
Renee G. Weeks
Maria A. Wein
Maryann Whalen
Jessica K. Wong
Tiffany Wong
Lissa K. Woo
Laura M. Wooding
Suzy Wu
Brenda Wyllie
Regina Yanovsky
Kamel Yatcha
Douglas S. Yee
Yelena Yegorova
Fung Yam Yeung
Gloria M. Yiu
Rocio Ynfante
Christine D. Young
Janet Young
Shui Yu
Mei M. Yun
Alex Yung
Yevgeniya Zagika
Evgenia Zagrebina
Fazia F. Zaman
Claudia A. Zarate Valentan
Li Jin Zhang
Shi Ning Zhang
Xing Hua Zhao
Jane A. Zigman
Jordan D. Zoltowsky



MJHS HEALTH SYSTEM BOARD OF DIRECTORS

Officers

Bradley Fluegel, *Chair*
Burton Esrig, *Vice-Chair*
Arthur Goshin, *Secretary*
Steven Topal, *Treasurer*

Directors

Peter Bailey
Alexander Balko
Ab Brody
Eli Feldman
Stephen Jackson
Amir Kishon
Geline Midouin
Danielle Rollmann
Jay Talbot
David Wagner
Ann Wyatt

MJHS EXECUTIVE LEADERSHIP

David Wagner

President and CEO
MJHS Health System

David Koschitzki

Chief Financial Officer
MJHS Health System

Christina Van Vort

Chief Legal Officer
MJHS Health System

Diane Ashley

*Chief Marketing &
Communications Officer*
MJHS Health System

Eni Bakallbashi

Chief Strategy Officer
MJHS Health System
Executive Director
MJHS Institute for Innovation

Loyola Princivil-Barnett, COO
MJHS Centers for Rehabilitation
and Nursing Care

Laurissa Burns

Chief Administrative Officer
Elderplan/HomeFirst

Laurie Chichester, COO

MJHS Home Care & Hospice

Nadine Ferguson

Chief Human Resources Officer
MJHS Health System

Diana Gelfand

Chief Clinical Officer
Elderplan/HomeFirst

Felicia Dyer Johnson

Chief Experience Officer
MJHS Health System

Jessica Laufer

AVP of Development
MJHS Foundation



Executive Editor

Diane Ashley

Creative Director

Tricia Chambers

Contributors

Zayra Arrieta
Chinwe Egonu
Mildred Latica
Jessica Laufer
Max Stern
Audrey Waters



Leading the way to great care.SM

55 Water Street, 46th Floor
New York, NY 10041

Change Service Requested



Upcoming Events

Each year, MJHS Foundation hosts events to support the mission of MJHS Health System. Not only do these events help raise essential funds, they also provide an opportunity to get together, thank our supporters and show them first-hand the difference their involvement makes—while having a little fun.

GOLF CLASSIC at Old Westbury Golf & Country Club on June 30

The Golf Classic is dedicated to raising funds for the underfunded programs and services of MJHS Health System.

WINE TASTING

Our Wine Tasting event is dedicated to raising funds to support the Golden Family STAR program, which provides additional home health aide hours to families in need.

HOSPICE GOES TO BROADWAY

Hospice Goes to Broadway is dedicated to raising awareness and funds for the end-of-life programs MJHS Hospice provides to those in need.



Dates will be announced on our website and @mjhs01. If you are interested in being part of one of our events, contact the Foundation at **(212) 356-5300**, email us at events@mjhsfoundation.org or visit mjhsfoundation.org/mjhs-events.